



A method for detection of muon induced electromagnetic showers with the ANTARES detector

J.A. Aguilar^a, I. Al Samarai^b, A. Albert^c, M. André^d, M. Anghinolfi^e, G. Anton^f, S. Anvar^g, M. Ardid^h, A.C. Assis Jesusⁱ, T. Astraatmadja^{i,1}, J.J. Aubert^b, B. Baret^j, S. Basa^k, V. Bertin^b, S. Biagi^{l,m}, A. Bigiⁿ, C. Bigongiari^a, C. Bogazziⁱ, M. Bou-Cabo^h, B. Bouhou^j, M.C. Bouwhuisⁱ, J. Brunner^{b,2}, J. Busto^b, F. Camarena^h, A. Capone^{o,p}, C. Cârloganu^q, G. Carminati^{l,m,3}, J. Carr^b, S. Cecchini^m, Z. Charif^b, P. Charvis^r, T. Chiarusi^m, M. Circella^s, R. Coniglione^t, H. Costantini^e, P. Coyle^b, C. Curtil^b, M.P. Decowskiⁱ, I. Dekeyser^u, A. Deschamps^r, C. Distefano^t, C. Donzaud^{j,v}, D. Dornic^{b,a}, Q. Dorosti^w, D. Drouhin^c, T. Eberl^f, U. Emanuele^a, A. Enzenhöfer^f, J.P. Ernenwein^b, S. Escoffier^b, P. Fermani^{o,p}, M. Ferri^h, V. Flaminio^{n,g}, F. Folger^f, U. Fritsch^f, J.L. Fuda^u, S. Galatà^b, P. Gay^q, G. Giacomelli^{l,m}, V. Giordano^t, J.P. Gómez-González^a, K. Graf^f, G. Guillard^q, G. Halladjian^b, G. Hallewell^b, H. van Haren^x, J. Hartmanⁱ, A.J. Heijboerⁱ, Y. Hello^r, J.J. Hernández-Rey^a, B. Herold^f, J. Hößl^f, C.C. Hsuⁱ, M. de Jong^{i,1}, M. Kadler^y, O. Kalekin^f, A. Kappes^f, U. Katz^f, O. Kavatsyuk^w, P. Kooijman^{i,z,aa}, C. Kopper^f, A. Kouchner^j, I. Kreykenbohm^y, V. Kulikovskiy^{ab,e}, R. Lahmann^f, P. Lamare^g, G. Larosa^h, D. Lattuada^t, D. Lefèvre^u, G. Lim^{i,aa}, D. Lo Presti^{ac,ad}, H. Loehner^w, S. Loucatos^{ae}, S. Mangano^{a,*}, M. Marcelin^k, A. Margiotta^{l,m}, J.A. Martinez-Mora^h, A. Meli^f, T. Montaruli^{s,af}, L. Moscoso^{ae,j}, H. Motz^f, M. Neff^f, E. Nezri^k, D. Palioselitisⁱ, G.E. Păvălaș^{ag}, K. Payet^{ae}, P. Payre⁴, J. Petrovicⁱ, P. Piattelli^t, N. Picot-Clemente^b, V. Popa^{ag}, T. Pradier^{ah}, E. Presaniⁱ, C. Racca^c, C. Reedⁱ, C. Richardt^f, R. Richter^f, C. Rivière^b, A. Robert^u, K. Roensch^f, A. Rostovtsev^{aj}, J. Ruiz-Rivas^a, M. Rujoiu^{ag}, G.V. Russo^{ac,ad}, F. Salesa^a, P. Sapienza^t, F. Schöck^f, J.P. Schuller^{ae}, F. Schüssler^{ae}, R. Shanidze^f, F. Simeone^p, A. Spies^f, M. Spurio^{l,m}, J.J.M. Steijgerⁱ, T. Stolarczyk^{ae}, A. Sánchez-Losa^a, M. Taiuti^{ai,e}, C. Tamburini^u, S. Toscano^a, B. Vallage^{ae}, V. Van Elewyck^j, G. Vannoni^{ae}, M. Vecchi^{o,b}, P. Vernin^{ae}, G. Wijnkerⁱ, J. Wilms^y, E. de Wolf^{i,aa}, H. Yepes^a, D. Zaborov^{aj}, J.D. Zornoza^a, J. Zúñiga^a

^a IFIC—Instituto de Física Corpuscular, Edificios Investigación de Paterna, CSIC—Universitat de València, Apdo. de Correos 22085, 46071 Valencia, Spain

^b CPPM—Centre de Physique des Particules de Marseille, CNRS/IN2P3 et Université de la Méditerranée, 163 Avenue de Luminy, Case 902, 13288 Marseille Cedex 9, France

^c GRPHE—Institut universitaire de technologie de Colmar, 34 rue du Grillenbreit BP 50568—68008 Colmar, France

^d Technical University of Catalonia, Laboratory of Applied Bioacoustics, Rambla Exposició, 08800 Vilanova i la Geltrú, Barcelona, Spain

^e INFN—Sezione di Genova, Via Dodecaneso 33, 16146 Genova, Italy

^f Friedrich-Alexander-Universität Erlangen-Nürnberg, Erlangen Centre for Astroparticle Physics, Erwin-Rommel-Str. 1, 91058 Erlangen, Germany

^g Direction des Sciences de la Matière—Institut de recherche sur les lois fondamentales de l'Univers—Service d'Electronique des Détecteurs et d'Informatique, CEA Saclay, 91191 Gif-sur-Yvette Cedex, France

^h Institut d'Investigació per a la Gestió Integrada de Zones Costaneres (IGIC)—Universitat Politècnica de València. C/ Paranimf 1, 46730 Gandia, Spain

ⁱ Nikhef, Science Park, Amsterdam, The Netherlands

^j APC—Laboratoire AstroParticule et Cosmologie, UMR 7164 (CNRS, Université Paris 7 Diderot, CEA, Observatoire de Paris) 10, rue Alice Domon et Léonie Duquet, 75205 Paris Cedex 13, France

^k LAM—Laboratoire d'Astrophysique de Marseille, Pôle de l'Étoile Site de Château-Gombert, rue Frédéric Joliot-Curie 38, 13388 Marseille Cedex 13, France

^l Dipartimento di Fisica dell'Università, Viale Berti Pichat 6/2, 40127 Bologna, Italy

^m INFN—Sezione di Bologna, Viale Berti Pichat 6/2, 40127 Bologna, Italy

ⁿ INFN—Sezione di Pisa, Largo B. Pontecorvo 3, 56127 Pisa, Italy

^o Dipartimento di Fisica dell'Università La Sapienza, P.le Aldo Moro 2, 00185 Roma, Italy

^p INFN—Sezione di Roma, P.le Aldo Moro 2, 00185 Roma, Italy

^q Clermont Université, Université Blaise Pascal, CNRS/IN2P3, Laboratoire de Physique Corpusculaire, BP 10448, 63000 Clermont-Ferrand, France

^r Géoazur—Université de Nice Sophia-Antipolis, CNRS/INSU, IRD, Observatoire de la Côte d'Azur and Université Pierre et Marie Curie, BP 48, 06235 Villefranche-sur-mer, France

^s INFN—Sezione di Bari, Via E. Orabona 4, 70126 Bari, Italy

^t INFN—Laboratori Nazionali del Sud (LNS), Via S. Sofia 62, 95123 Catania, Italy

^u COM—Centre d'Océanologie de Marseille, CNRS/INSU et Université de la Méditerranée, 163 Avenue de Luminy, Case 901, 13288 Marseille Cedex 9, France

^v Université Paris-Sud 11—Département de Physique, 91405 Orsay Cedex, France

^w Kernfysisch Versneller Instituut (KVI), University of Groningen, Zernikelaan 25, 9747 AA Groningen, The Netherlands

^x Royal Netherlands Institute for Sea Research (NIOZ), Landsdiep 4, 1797 SZ 't Horntje (Texel), The Netherlands

^y Dr. Reimis-Sternwarte and ECAP, Universität Erlangen-Nürnberg, Sternwartstr. 7, 96049 Bamberg, Germany

^z Universiteit Utrecht, Faculteit Betawetenschappen, Princetonplein 5, 3584 CC Utrecht, The Netherlands

^{aa} Universiteit van Amsterdam, Instituut voor Hoge-Energie Fysika, Science Park 105, 1098 XG Amsterdam, The Netherlands

^{ab} Moscow State University, Skobeltsyn Institute of Nuclear Physics, Leninskie gory, 119991 Moscow, Russia

^{ac} Dipartimento di Fisica ed Astronomia dell'Università, Viale Andrea Doria 6, 95125 Catania, Italy

^{ad} INFN—Sezione di Catania, Viale Andrea Doria 6, 95125 Catania, Italy

^{ae} Direction des Sciences de la Matière—Institut de recherche sur les lois fondamentales de l'Univers—Service de Physique des Particules, CEA Saclay, 91191 Gif-sur-Yvette Cedex, France

^{af} University of Wisconsin—Madison, 53715 WI, USA

^{ag} Institute for Space Sciences, R-77125 Bucharest, Măgurele, Romania

^{ah} IPHC-Institut Pluridisciplinaire Hubert Curien—Université de Strasbourg et CNRS/IN2P3 23 rue du Loess, BP 28, 67037 Strasbourg Cedex 2, France

^{ai} Dipartimento di Fisica dell'Università, Via Dodecaneso 33, 16146 Genova, Italy

^{aj} ITEP—Institute for Theoretical and Experimental Physics, B. Chermushkinskaya 25, 117218 Moscow, Russia

ARTICLE INFO

Article history:

Received 2 June 2011

Received in revised form

10 November 2011

Accepted 26 January 2012

Available online 3 February 2012

Keywords:

Neutrino telescope

Electromagnetic shower identification

High energy muons

Energy reconstruction

ABSTRACT

The primary aim of ANTARES is neutrino astronomy with upward going muons created in charged current muon neutrino interactions in the detector and its surroundings. Downward going muons are background for neutrino searches. These muons are the decay products of cosmic-ray collisions in the Earth's atmosphere far above the detector. This paper presents a method to identify and count electromagnetic showers induced along atmospheric muon tracks with the ANTARES detector. The method is applied to both cosmic muon data and simulations and its applicability to the reconstruction of muon event energies is demonstrated.

© 2012 Elsevier B.V. All rights reserved.

1. Introduction

The ANTARES neutrino telescope is located at a depth of 2475 m in the Mediterranean Sea, roughly 40 km offshore from Toulon in France. Its main objective is the observation of extraterrestrial neutrinos. Relativistic charged leptons produced by neutrino interactions in and around the detector produce Cherenkov light in the sea water. This light is detected by an array of photomultiplier tubes, allowing the muon direction to be reconstructed.

Although the ANTARES detector is optimised for upward going particle detection, the most abundant signal is due to atmospheric downward going muons [1–3] produced in the particle showers induced by the interactions of cosmic-rays in the atmosphere. In order to reduce this background the Earth is used as a filter, restricting the search for cosmic neutrinos to sources in the Southern sky.

The processes contributing to the energy loss of a muon in water include ionization, e^+e^- pair production, bremsstrahlung, and photonuclear interactions [4–7]. Below about 1 TeV, the muon energy loss is dominated by the continuous ionization process. Above about 1 TeV, the muon energy loss is characterised by large energy fluctuations and discrete bursts. These bursts originate from pair production and bremsstrahlung (electromagnetic showers). The photonuclear interaction processes are less frequent and in the following no distinction is made between photonuclear induced showers and electromagnetic showers. The average muon energy loss per unit track length due to these electromagnetic showers increases linearly with the energy of the muon [4].

A reconstruction algorithm is presented to identify electromagnetic showers induced by highly energetic muons with the ANTARES detector. The shower reconstruction algorithm relies on

the identification of increased photon emission along the muon trajectory. Counting electromagnetic showers along muon tracks to give an estimate of the muon energy is called the *pair meter* method [8,9]. The estimate of the energy of muons is important for many research topics. For example, an alternative method for estimating the energy of muons based on the occurrence rate of repeated measured photons on the photomultiplier tubes [10] has been used by the ANTARES Collaboration to search for a diffuse flux of cosmic high energy muon neutrinos. Moreover, the angular resolution of the muon trajectory could benefit from a precise discrimination of photon emission mechanisms along the estimated track. A similar measurement technique as the one presented in this article has been published recently by the Super-Kamiokande Collaboration and used to select a sample of upward going muons with energies above a TeV [11].

2. The ANTARES detector

A detailed description of the ANTARES detector is given elsewhere [12–15].

The full detector consists of 12 vertical lines approximately 450 m in height equipped with a total of 885 photomultiplier tubes (PMTs). The lines, separated from each other by about 65 m, are anchored to the sea floor by a dead weight and held taut by a buoy located at the top. The instrumented part of the line starts 100 m above the sea floor and consists of 25 floors with a separation distance of 14.5 m along the line. The distance from the highest floor to the sea surface is around 2000 m. A floor consists of three PMTs pointing downward at an angle of 45° with respect to the vertical direction, in order to maximise the detection efficiency of upward going tracks.

ANTARES is operating in the so called all-data-to-shore mode: all signals above a charge threshold (typically 0.3 photoelectrons) are digitised offshore and sent to shore to be processed in a computer farm. This farm applies a set of trigger criteria in order to separate muon-induced Cherenkov light from background light. The main sources of background light are the decay

* Corresponding author. Tel.: +34963543847.

E-mail address: manganos@ific.uv.es (S. Manganos).

¹ Also at University of Leiden, The Netherlands.

² On leave at DESY, Platanenallee 6, 15738 Zeuthen, Germany.

³ Now at University of California—Irvine, 92697, CA, USA.

⁴ Deceased.

of ^{40}K nuclei and the bioluminescence from organisms in the sea water.

3. Algorithm for shower identification

The technique of the electromagnetic shower identification aims at distinguishing Cherenkov photons emitted continuously along the muon track, hereafter called *muon Cherenkov photons*, from the Cherenkov photons induced by electromagnetic showers, hereafter called *shower photons*. Because of the short radiation length in water ($X_0 = 35$ cm), these showers rarely extend more than a few meters and can be considered point-like light sources for the ANTARES detector. The electromagnetic showers are identified by an excess of photons above the continuous baseline of Cherenkov photons emitted by a minimum ionizing muon.

The shower identification algorithm consists of two steps. The first step allows the identification and reconstruction of muon tracks. In the second step, a distinct shower candidate is identified by a cluster of measured photons at a particular point along the muon path. The criteria to isolate this cluster are determined using a simulation code based on Corsika [16].

3.1. Simulation

Cosmic-ray interactions in the atmosphere, including atmospheric shower development, were simulated with Corsika for primary energies between 1 TeV and 10^5 TeV, and incident angles between zero (vertical downward going) and 85° . The primary cosmic-ray composition and flux model employed is a simplified version of the Hörandel parametrisation⁵ [17]. The chosen hadronic interaction model is QGSJET [18]. The result of the Corsika simulation is a set of muon tracks with their position, arrival time and momentum given at the surface of the sea. Typically, a single interaction leads to many muons at the sea surface. These muons are propagated through water. The discrete energy losses at high energies, the Cherenkov light production and propagation, including scattering, and the response of the detector are simulated using a dedicated simulation package [19,20]. The muon propagation is performed by MUSIC [21] in steps of 1 m. If the energy loss of the muon over the step exceeds a given threshold (1 GeV), an electromagnetic shower is simulated and shower photons are emitted. If the energy loss of the muon over the step is below the threshold, only muon Cherenkov photons are simulated. The simulation package also uses tables generated from GEANT 3 [22] that parameterise the arrival time and the amount of light detected by individual PMTs. These tables take into account the measured properties of the water at the ANTARES site, the angular dependence of the acceptance of the PMT and also the position, distance and orientation of the PMT with respect to a given muon track. The optical background is assumed to be constant at a rate of 60 kHz [23] on each PMT.

3.2. Algorithm

The shower identification algorithm proceeds in several steps. First, the muon trajectory must be determined. This is done using a standard tracking algorithm [24,25] that provides an estimate of the direction and position of the muon at a given time. In what follows, a hit is taken to be a photomultiplier signal exceeding a charge threshold of 0.3 photoelectrons [26]. Using the configuration in Fig. 1, the expected Cherenkov photon arrival time t_i^{CK} for each hit i

is calculated as

$$t_i^{\text{CK}} = t + \frac{1}{c} \left(z_i - z - \frac{r_i}{\tan \theta_{\text{CK}}} \right) + \frac{n}{c} \frac{r_i}{\sin \theta_{\text{CK}}}, \quad (1)$$

where t is the time at which the muon passes point (r, z) , c/n is the group velocity of light in water ($n = 1.38$ is the group refractive index for ANTARES water), θ_{CK} is the Cherenkov angle for a relativistic muon in water ($\theta_{\text{CK}} \sim 42^\circ$) and r_i is the perpendicular distance between the muon trajectory and the PMT.

The fitted trajectory can be used to characterize hits by their arrival times into three groups: early hits that are predominantly due to Cherenkov photons, late hits that are mainly due to scattered and shower photons, and extremely early or late hits that can safely be assumed to be due to background. Fig. 2 shows time residuals ($t_i - t_i^{\text{CK}}$) for muon energies between 100 GeV and 100 TeV generated by the simulation described in Section 3.1. Direct hits have a roughly Gaussian distribution (with a long tail of late hits) with a peak at zero time residual and a full width at half maximum of ~ 20 ns.

Early hits ($|t_i - t_i^{\text{CK}}| < t_{\text{min}}, t_{\text{min}} = 20$ ns) contain mostly muon Cherenkov photons whose emission positions along the muon track are given by

$$\zeta_i^{\text{CK}} = z_i - z - \frac{r_i}{\tan \theta_{\text{CK}}}. \quad (2)$$

The variation in the arrival time of these Cherenkov hits can be attributed to the dispersion of light in the sea water. Note that Eq. (2) is used to determine the emission point of all photons leading to early hits, even shower photons that may not be emitted at the Cherenkov angle.

Late hits ($t_{\text{min}} < t_i - t_i^{\text{CK}} < t_{\text{max}}, t_{\text{max}} = 200$ ns) contain the largest fraction of hits due to shower photons. The value of t_{max} has been taken to be the point at which a hit is equally likely to be due to a shower photon as to a background photon. These shower photons may not necessarily be emitted at the Cherenkov angle from the muon track. Therefore the emission angle is left as a free parameter and, with the photon emission taking place at ζ_i (see Fig. 1), the hit time is given by

$$t_i = t + \frac{\zeta_i - z}{c} + \frac{n}{c} \sqrt{r_i^2 + (z_i - \zeta_i)^2}. \quad (3)$$

Eq. (3) has two distinct solutions, ζ_i^+ and ζ_i^- .

Extremely late or early hits ($t_i > t_{\text{max}}$ or $t_i < -t_{\text{min}}$) are assumed to be background hits and are rejected.

All calculated ζ_i^{CK} , ζ_i^+ and ζ_i^- positions along the muon track are collected in a one dimensional histogram. The shower position is identified by the localised increase of the number of emitted photons along the reconstructed muon trajectory, identified by

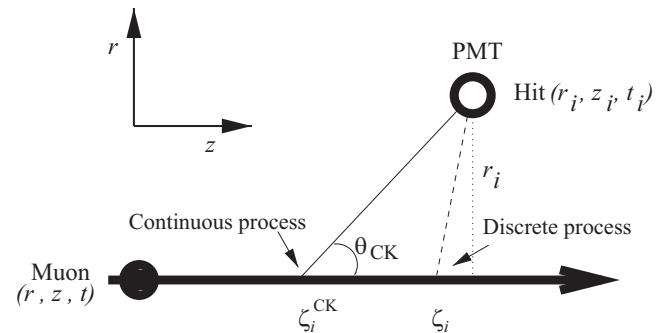


Fig. 1. Schematic view of muon Cherenkov light detection. The thick line represents the muon trajectory, the thin line the path of Cherenkov light and the thin dashed line the path of shower light. The muon goes through a reference point (r, z, t) . The Cherenkov light is emitted at an angle θ_{CK} with respect to the muon track at point ζ_i^{CK} and is detected by a PMT as a hit at point (r_i, z_i, t_i) . The shower light is emitted at point ζ_i and is detected by the same PMT at a different time.

⁵ The primary composition of the flux is subdivided into only five mass groups, namely proton, helium, nitrogen, magnesium and iron.

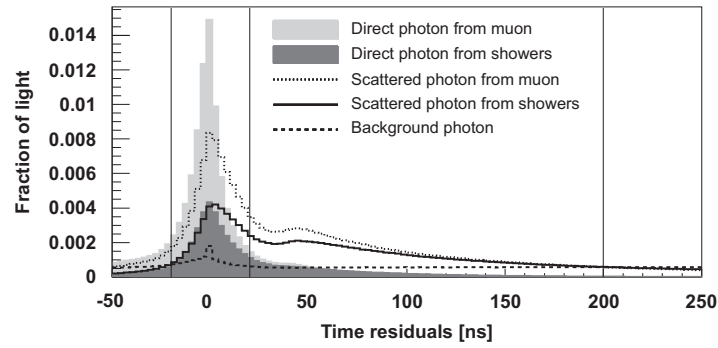


Fig. 2. Time residuals for the measured photon arrival times relative to the calculated arrival times of Cherenkov photons coming from reconstructed muon tracks in a Monte Carlo sample. Contributions are shown for the direct and scattered photons originating from the muon as well as from the showers. Also shown are background photons. The three vertical lines define the early time interval (between -20 ns and 20 ns) and the late time interval (between 20 ns and 200 ns). The enhancement at 45 ns is due to an effect of the PMT read-out electronics, which has been included in the simulation.

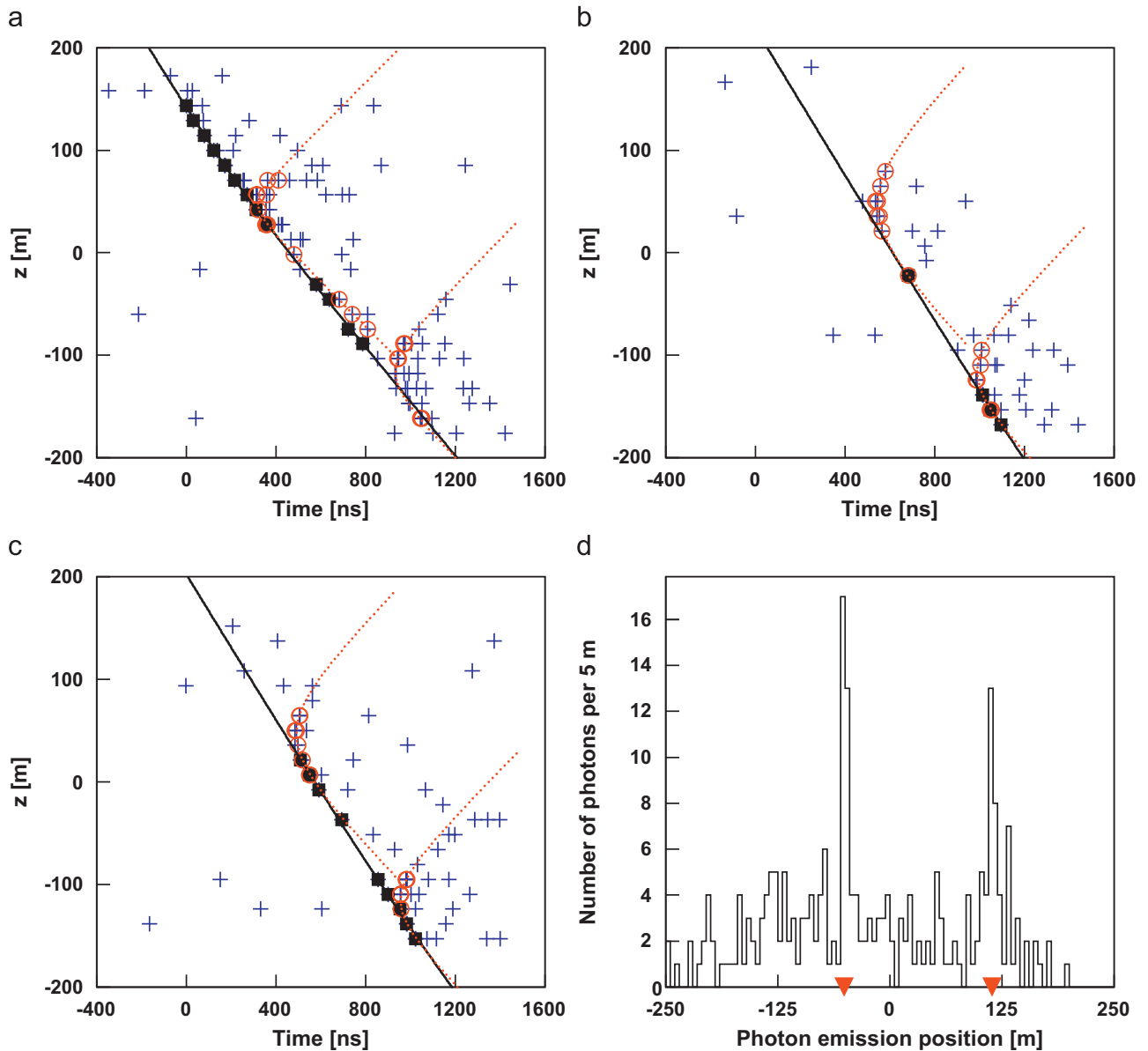


Fig. 3. Display of an atmospheric muon event. The first three panels (a)–(c) show, for each line, the altitude of the photomultiplier tube for each associated photon (crosses) as a function of the arrival time of the photon. The origin on the z -axis corresponds to the middle of the line and the time offset is chosen with respect to the time of the first detected photon compatible with the muon trajectory. The muon track (solid line) and two electromagnetic showers (curved dotted lines) are reconstructed. The black squares indicate identified photons which are used in the muon trajectory reconstruction. The empty circles around the crosses indicate photons used in the shower reconstruction. The bottom right plot (d) shows the number of detected photons projected along the muon trajectory. The peaks correspond to the reconstructed shower positions indicated by the triangles.

a peak in the histogram. If the two solutions ζ_i^+ and ζ_i^- are found in different peaks, the shower identification procedure will ignore the solution in the smaller peak.

An example of the application of this procedure to data can be seen in Fig. 3. The bottom right panel of this figure shows the emission points of photons along the muon trajectory, as determined by the solutions of Eqs. (2) and (3). Two excesses are visible and are attributed to two electromagnetic showers. Each of the other three panels shows a height versus time diagram of data obtained from one of the detector lines. The result of the muon trajectory reconstruction for a relativistic muon in water together with results of the shower identification are also displayed. A downward going muon with two electromagnetic showers is thereby identified. Using the fitted shower positions from the shower identification algorithm, a prediction is made for the arrival time of the shower light. The dotted curves in Fig. 3 show the expected photon arrival time under the assumption of a spherical light emission from the reconstructed position of the shower. As can be seen from Fig. 3, most, but not all, photons are associated with the muon track fit. Many photons that do not comply with the muon track fit are associated to shower photons. The photons not associated with the muon track or associated showers can be attributed to random background photons due to radioactive ^{40}K decays and bioluminescence.

4. Selection and performance

The selection and performance of the shower identification algorithm has been studied with the simulation described in Section 3.1.

4.1. Muon and shower selection

The shower identification algorithm is applied to well reconstructed muon tracks that have the potential to produce a detectable shower. Two criteria have been used to select such tracks. First, the track length is required to be at least 125 m. The track length is taken to be the distance between the emission points of the photons that gave rise to the earliest and latest hit used in the muon track reconstruction. Second, the muon trajectory reconstruction is required to have used at least 12 hits. These criteria select about 65% of all reconstructed (downward going) muon tracks.

The shower-induced photon emission along the muon trajectory results in localised peaks as shown in Fig. 3d. The task to identify a shower is then reduced to a one dimensional peak finding algorithm whose result can be characterised by three parameters, namely the center, width and height of the identified peak. Potential peaks are identified through the subtraction of the constant photon background, as determined by a sensitive non-linear peak clipping algorithm. This algorithm tracks the baseline of a spectrum by comparing the value of each data point with the average value of neighboring data points, taking the baseline to be the smaller value. Further details can be found in Ref. [27].

For each potential peak, the number of hits is integrated in a ± 5 m window around the peak center. All hits are assumed to be single photons. Only peaks having at least 10 hits above Cherenkov photon baseline in this window of 10 m are selected (typically yielding peaks with three sigma significance). The number of baseline hits is defined as the average number of hits along the track times the window of 10 m. In order to suppress wrongly identified showers, hits from at least five different floors are required for each peak.

4.2. Performance of the shower identification method

Fig. 4 shows the number of detectable showers, coming from well reconstructed muons, that have shower photons detected on at least five different floors per atmospheric muon event as a function of the muon energy. The atmospheric muon events are usually muons in a bundle with an average multiplicity around 3.3 [16]. The muon energy in Fig. 4 refers to the muon with the largest energy in the bundle. These muons have an average energy of 1.2 TeV and their mean generated shower energy is around 120 GeV. Muons with at least one identified shower have on average 2.5 times higher energy than muons without an identified shower.

The event selection and algorithm has been tuned to count the number of showers with a high level of purity, even at the expense of efficiency. In order to study the efficiency and purity of the reconstruction, the Monte Carlo truth information is consulted to determine whether the result of the shower reconstruction corresponds to any actual shower and, if so, whether that shower has been well reconstructed. A reconstructed shower is said to have correctly identified an underlying shower if its position is determined to within 25 m of the true generation point and if 25% of the hits in the reconstructed shower are truly due to photons produced by the underlying shower. Here, a hit is in the reconstructed shower if its projected emission point along the muon track is within 5 m of the reconstructed shower position (see Fig. 3d).

The efficiency with which showers are correctly identified is given by the ratio of the number of well identified showers to the total number of simulated showers that give rise to hits in at least five different floors, i.e. all showers that may reasonably be expected to be reconstructed. The shower identification efficiency ranges from 5% at low shower energy (~ 300 GeV) to 30% at high shower energy (~ 5 TeV), as shown in Fig. 5a.

The purity of the reconstructed shower sample is given by the ratio of the number of correctly identified showers to the number of all reconstructed showers and is shown in Fig. 5b. The shower purity ranges from 40% at low shower energy (~ 300 GeV) to 90% at high shower energy (~ 1 TeV). At even higher shower energies, the purity decreases, reaching 60% at 30 TeV. Such showers are mainly produced by very high energy muons. The density of photons along the trajectory of such a muon is great enough that an excess of photons due to a particular shower becomes difficult to observe.

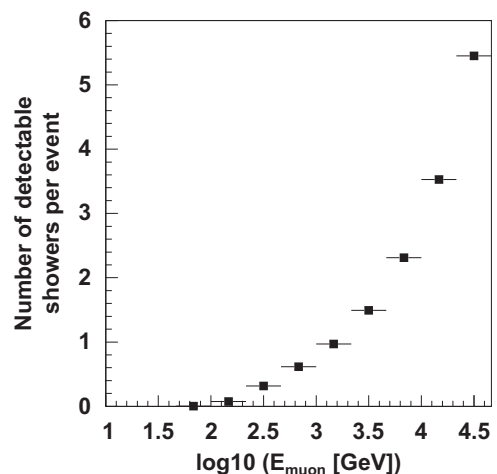


Fig. 4. Average number of detectable showers which have shower photons detected on at least five different floors per atmospheric muon event as a function of the muon energy.

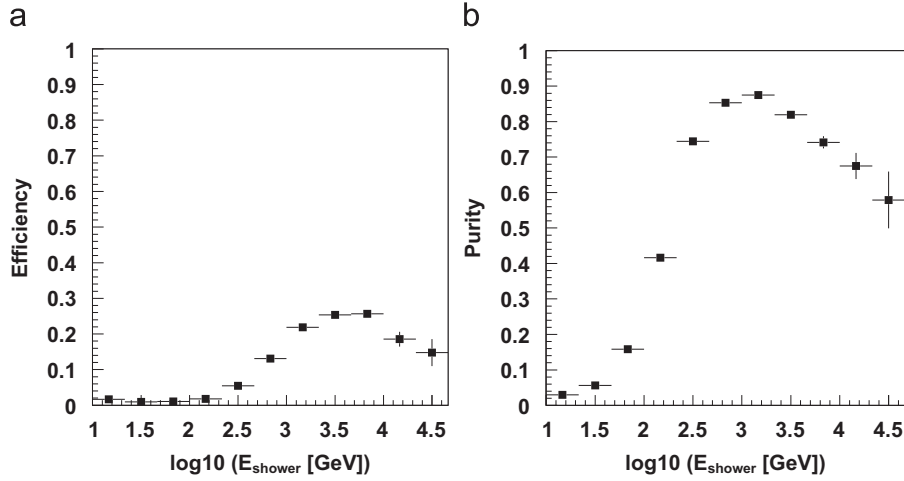


Fig. 5. (a) Efficiency and (b) purity as a function of the shower energy for reconstructed showers obtained with a Monte Carlo sample of atmospheric muons.

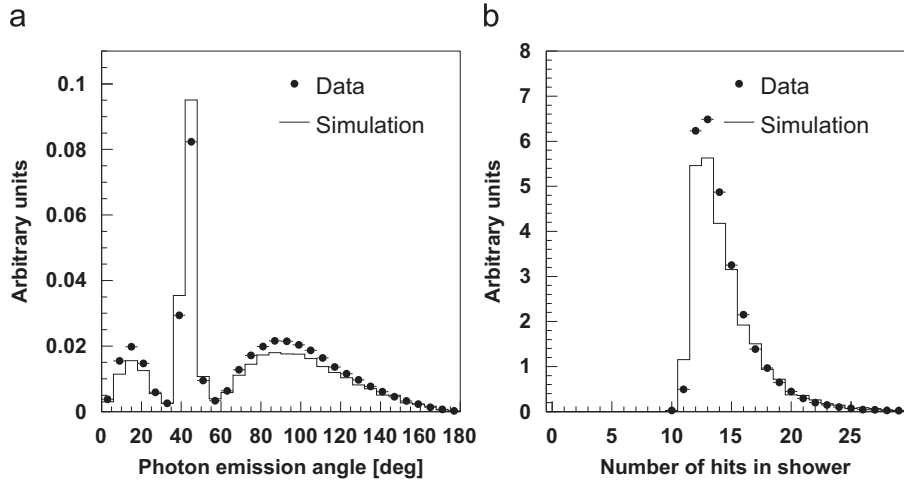


Fig. 6. (a) Photon emission angle and (b) relative number of hits (note that a minimal number of 10 hits is required by the identification algorithm) used in the shower identification for the data and the Corsika simulation.

5. Comparison between data and Monte Carlo simulations

A sample of data corresponding to 47.3 days of data taking between January and December 2007 has been used to study the behavior of the shower identification algorithm. During this period the detector comprised five lines.

The Corsika simulation (including the simplified Hörandel flux) was scaled by a factor 0.83 to normalise the simulated muon rate to the measured muon rate for the selected tracks. Fig. 6a shows the angular distribution of the shower photons with respect to the muon direction. The shape of the distribution is determined by detector effects and the cuts used in the analysis. The peak around 42° comes from shower photons emitted at the Cherenkov angle through showers oriented in the direction of the muon and whose emission points have been calculated using Eq. (2), whereas the other hits have been calculated using Eq. (3).

Fig. 6b shows the hit multiplicity distribution of selected showers. With the final set of cuts applied, the average number of hits associated to an identified shower is around 14. As the quantity of Cherenkov light produced by an electromagnetic shower increases linearly with the muon energy, counting the number of hits in one shower provides a first order estimate of its energy. The data distributions agree reasonably well with the Corsika simulation.

The simulation has also been used to evaluate systematic uncertainty on the number of identified showers. Table 1 shows the

Table 1

Variation in the number of identified showers as the values of selected Monte Carlo parameters are changed. The systematic uncertainty is estimated by varying the background rate, the energy threshold to produce photons from electromagnetic shower light, the PMT angular acceptance and the water absorption length (see text).

Number of identified showers	0	1	2	3+
Source of uncertainty	Variation in (%)			
Background rate	0.1	1	12	14
Minimal shower energy	0.1	3	6	5
PMT angular acceptance	1.2	18	30	3
Absorption length	1.3	17	39	77
Total systematic uncertainty (%)	± 1.8	± 25	± 51	± 78

systematic uncertainty determined by varying parameters in the simulation [2]. The measured detector background rate is around 60 kHz on average [23]. The systematic error arising from the uncertainty of this background rate is estimated by repeating the analysis with a background rate of 50 kHz and with a background rate of 120 kHz (row three in Table 1). The values are the percentage variation with respect to the values from the default simulation. Uncertainties arising from the energy threshold to produce hits from electromagnetic showers or hits from muon Cherenkov light

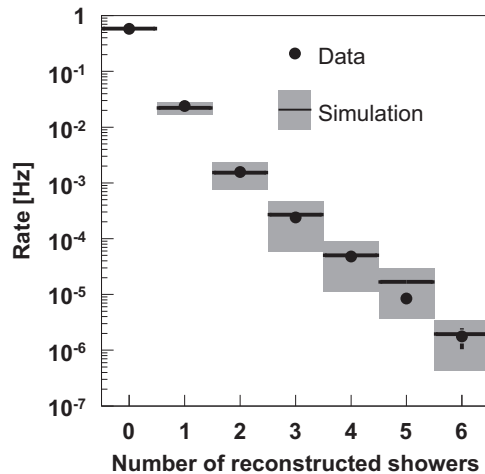


Fig. 7. Muon event rate as a function of the shower multiplicity for data (points) and the Corsika simulation (line) with no correction for the identification efficiency. The systematic error for the simulation is given by the height of the grey bands. Only statistical errors are shown for the data points.

is estimated by varying the threshold $\pm 50\%$ from its default value of 1 GeV (row four in Table 1). Uncertainty on the angular acceptance of the optical modules is estimated by taking a different parametrization of the PMT angular acceptance [2] (row five in Table 1). The water properties are taken into account by varying the absorption length by $\pm 20\%$ around the measured value [28] (row six in Table 1).

All systematic uncertainties are added in quadrature. The largest contributions to the systematic error arise from uncertainties on the PMT angular acceptance and on the water absorption length. When decreasing the absorption length, fewer showers are identified, since more photons are absorbed in the water before they reach the PMTs. On the other hand, the systematic studies show evidence that the shower algorithm is robust against large variations of the background, because showers emit a light density much bigger than that of the optical background.

The muon event rate as a function of the number of identified showers is shown in Fig. 7. The distribution shows the results for data and the Corsika based simulation with no correction for the identification efficiency. Also shown is the systematic uncertainty for the simulation. For the data points, only the statistical errors are shown. As can be seen, about 4% of the selected muon tracks have one well identified shower. There is agreement between data and Monte Carlo over five orders of magnitude.

6. Conclusions

A method to identify electromagnetic showers emitted by muons has been developed, characterised and applied to the downward going muon data taken with the ANTARES detector. This algorithm exploits the different emission characteristics of shower-induced and primary muon-induced Cherenkov photons. The shower light emission is localised at discrete points along the muon trajectory, whereas the traversing muon continuously emits Cherenkov photons under a constant and known angle relative to the muon trajectory. The essential element of the algorithm is the projection and identification of photon vertices along the muon track with a subsequent peak finding algorithm. The performance of the identification algorithm has been validated using a sample of simulated atmospheric muon events and agreement was found in the number of identified showers between data and simulations.

With the development and validation of this electromagnetic shower multiplicity estimator, important new information becomes available for physics analysis. In particular the method establishes a first step towards a new energy estimator. With the application of this method, it can be concluded that stochastic energy loss has been observed in ANTARES.

Acknowledgments

The authors acknowledge the financial support of the funding agencies: Centre National de la Recherche Scientifique (CNRS), Commissariat à l'énergie atomique et aux énergies alternatives (CEA), Agence National de la Recherche (ANR), Commission Européenne (FEDER fund and Marie Curie Program), Région Alsace (contrat CPER), Région Provence-Alpes-Côte d'Azur, Département du Var and Ville de La Seyne-sur-Mer, France; Bundesministerium für Bildung und Forschung (BMBF), Germany; Istituto Nazionale di Fisica Nucleare (INFN), Italy; Stichting voor Fundamenteel Onderzoek der Materie (FOM), Nederlandse organisatie voor Wetenschappelijk Onderzoek (NWO), the Netherlands; Council of the President of the Russian Federation for young scientists and leading scientific schools supporting grants, Russia; National Authority for Scientific Research (ANCS), Romania; Ministerio de Ciencia e Innovación (MICINN), Prometeo de Generalitat Valenciana and MultiDark, Spain. We also acknowledge the technical support of Ifremer, AIM and Foselev Marine for the sea operation and the CC-IN2P3 for the computing facilities.

References

- [1] J.A. Aguilar, et al., *Astroparticle Physics* 33 (2010) 86.
- [2] J.A. Aguilar, et al., *Astroparticle Physics* 34 (2010) 179.
- [3] P. Coyle, The ANTARES Deep-Sea Neutrino Telescope: Status and First Results, 2010, arXiv:1002.0754.
- [4] K. Nakamura, et al., *Journal of Physics G* 37 (2010) 075021.
- [5] D.E. Groom, N.V. Mokhov, S.I. Striganov, *Atomic Data and Nuclear Data Tables* 78 (2001) 183.
- [6] S.I. Klimushin, E.V. Bugaev, I.A. Sokalski, Precise parametrizations of muon energy losses in water, 2001, arXiv:hep-ph/0106010.
- [7] T. Gaisser, *Cosmic Rays and Particle Physics*, Cambridge University Press, 1990, p. 75.
- [8] R. Kokoulin, A. Petrukhin, *Nuclear Instruments and Methods A* 263 (1988) 468.
- [9] R. Gandhi, S. Panda, *Journal of Cosmology and Astroparticle Physics* 0607 (2006) 011.
- [10] J.A. Aguilar, et al., *Physics Letters B* 696 (2011) 16.
- [11] S. Desai, et al., *Astroparticle Physics* 29 (2008) 42.
- [12] J.A. Aguilar, et al., *Astroparticle Physics* 34 (2011) 539.
- [13] J.A. Aguilar, et al., *Nuclear Instruments and Methods A* 622 (2010) 59.
- [14] J. Aguilar, et al., *Nuclear Instruments and Methods A* 570 (2007) 107.
- [15] P. Amram, et al., *Nuclear Instruments and Methods A* 484 (2002) 369.
- [16] D. Heck, G. Schatz, T. Thouw, J. Knapp, J.N. Capdevielle, CORSIKA: a Monte Carlo code to simulate extensive air showers, 1998, FZKA-6019.
- [17] J.R. Hoerandel, *Astroparticle Physics* 19 (2003) 193.
- [18] S. Ostapchenko, *AIP Conference Proceedings* 928 (2007) 118.
- [19] D.J.L. Bailey, Monte Carlo Tools and Analysis Methods for Understanding the ANTARES Experiment and Predicting Its Sensitivity to Dark Matter, Ph.D. Thesis, Oxford University, 2002, see also <http://antares.in2p3.fr/Publications/index.html#thesis>.
- [20] J. Brunner, Antares simulation tools, in: *Proceedings of the VLvNT Workshop*, Amsterdam, 2003, pp. 109–113, see also <http://www.vlvnt.nl/>.
- [21] P. Antonioli, C. Ghetti, E.V. Korolkova, V.A. Kudryavtsev, G. Sartorelli, *Astroparticle Physics* 7 (1997) 357.
- [22] GEANT, CERN Program Library Long Writup W5013, 1993.
- [23] S. Escoffier, The ANTARES Detector: Background Sources and Effects on Detector Performance, 2007, arXiv:0710.0527.
- [24] M. Ageron, et al., *Astroparticle Physics* 31 (2009) 277.
- [25] R. Bruijn, The ANTARES Neutrino Telescope: Performance Studies and Analysis of First Data, Ph.D. Thesis, Amsterdam University, 2008, see also <http://antares.in2p3.fr/Publications/index.html#thesis>.
- [26] J.A. Aguilar, et al., *Nuclear Instruments and Methods A* 555 (2005) 132.
- [27] M. Morhac, J. Kliman, V. Matousek, M. Veselsky, I. Turzo, *Nuclear Instruments and Methods A* 401 (1997) 113.
- [28] J.A. Aguilar, et al., *Astroparticle Physics* 23 (2005) 131.